

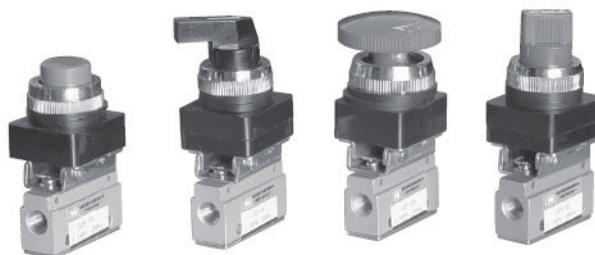
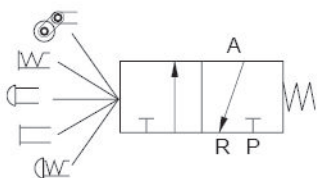
G 系列机械阀

Series mechanical valves

G321 系列二位三通机械阀

Series 3/2-way mechanical valves

图形符号 Graphical symbols



型号注释 Note for type

G 32 1 R

系列代号.机械阀 Series code:mechanical valves

二位三通 3/2-way

接管口径 1:G1/8 Pipe size, 1: G1/8

按钮形式: Form of the button

NON: 基本型 Normal type

R: 滚轮型 roller type

PP: 平圆型 Circular with flat Button

PPL: 凸圆型 Circular male cap surface

PB: 大圆型 Circular cap type

EB: 带锁型 with lock type

TB: 选择型 position select type

LB: 加长型 with handle type

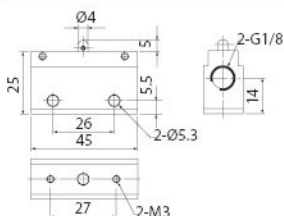
技术参数 Specification

规格 Item	G321R, PP, PPL, PB, TB, LB
工作介质work medium	空气 air
使用压力范围 working presure	0~1.0MPa
动作方式 action way	直动式 Direct action
润滑 Lubrication way	无油 non
使用温度 working temp	-5~60℃
按钮的标准颜色 standard color of button	黑色(Black): LB; 红色(Red):PP, PPL, PB, EB, TB
按钮的选购颜色 selected color of button to buy	绿色(green),黑色(black): PP,PPL,PB,TB

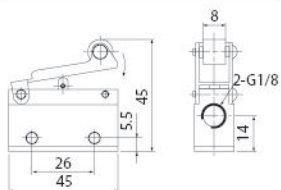
面板安装机 Install hole	孔径 mm	壁厚 mm
PP,PPL,TB,LB	25.5	6
PB EB	30.5	6

外形尺寸及按钮形式 Outlook Dimension and Form of the button

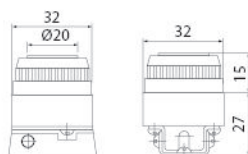
G321



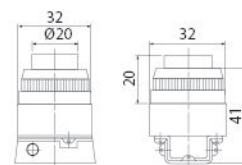
G321R



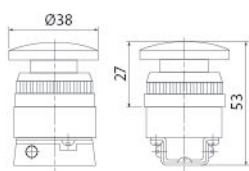
PP按钮/PP Button



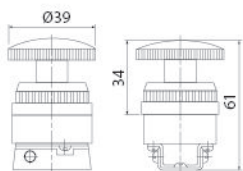
PPL按钮/PPL Button



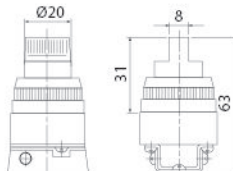
PB按钮/PB Button



EB按钮/EB Button



TB按钮/TB Button



LB按钮/LB Button

