

# JB2162-91 系列重型冶金设备用液压缸 series Hydraulic cylinder for heavy metallurgical equipment

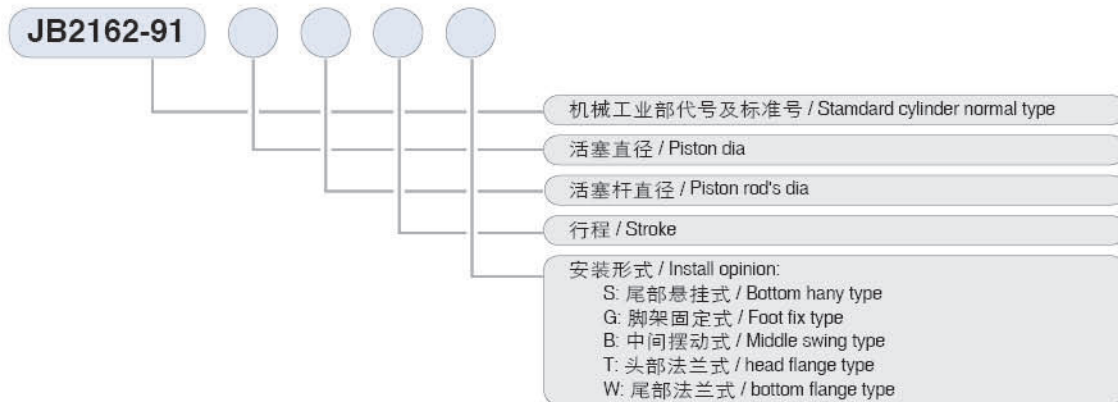
## 产品概要 Description

JB2162-91冶金设备用液压缸，是将JB2162-77液压缸标准的三种安装型式扩展为五种，其外部连接尺寸与JB2162-77标准基本相同，圆柱形外观，可适用于多种介质。该标准液压缸不仅适用于重型冶金设备，还广泛应用于矿山机械、工程运输、石油化工等行业。

JB2162-91 hydraulic cylinder for metallurgical equipment extend the install opinion of JB2162-77 from three to five, and its connect dimension are same as JB2162-77's, round in shape nice looking can be apply to kinds of medium.

This standard hydraulic cylinder not only apply to heavy metallurgical equipment, but also apply to mining machine, transport, petrochemical processing, etc.

## 型号注释 Note for type



## 基本性能 basic performance

项目 item	参数及性能 specification and features
公称压力 / Pressure	PN ≤ 16MPa
适用介质 / Medium	液压油、水、水乙二醇、磷酸酯 / hydraulic oil, water-glycol hydraulic fluid
适用温度 / Temperature	-30°C ~ +100°C
密封件 / seal components	采用国内和国外两种密封件，用户可根据实际需要自行确定 both local seals and inport seals are offer. It dependon request
缓冲 / Buffer	采用同间隙，可适应不同工况 / space buffer, can meet different request for buffer
放气 / Exjaist	采用放气螺塞调试放气 / bleed screw

## 技术参数 Specification

内径 Bore D (mm)	活塞杆直径 Piston rod's dia d (mm)	不同安装形式的许用行程					不同公称压力下的出力 Pressure (MPa)					
							6.3		10		16	
		S	G	B	T	W	推力(KN) Push force	拉力(KN) Pull force	推力(KN) Push force	拉力(KN) Pull force	推力(KN) Push force	拉力(KN) Pull force
50	28	400	1000	630	1000	450	12.40	8.50	19.60	13.50	31.40	21.60
63	35	550	1250	800	1250	630	19.64	13.22	31.17	21.55	49.90	33.58
80	45	800	1600	1000	1600	800	31.60	21.70	50.30	34.40	80.00	55.00
100	55	1000	2000	1250	2000	1000	49.50	34.50	78.50	54.80	125.75	86.30
125	70	1250	2500	1600	2500	1250	77.25	53.20	122.70	84.20	196.35	135.00
160	90	1600	3200	2000	3200	1800	126.70	86.60	201.00	137.40	321.70	220.00
200	110	2000	3600	2500	3600	2000	197.90	138.00	314.00	219.20	502.70	350.00
250	140	2500	4750	3200	4750	2800	309.25	212.27	490.87	336.93	785.40	539.10

注：①选用液压缸时，考虑管道阻力和机构中的摩擦损失，应将计算力增加10%。

②优选行程 / best stroke: 50, 63, 80, 100, 125, 160, 200, 250, 280, 320, 360, 400, 450, 500, 550, 630, 700, 800, 1000, 1250, 1600, 1800, 2000, 2500, 2800, 3200, 3500, 3600, 4000, 4250, 4500, 4750

#### 重量计算 Weight calculate

重量计算公式:

$$M = X + Y \cdot S$$

式中: M: 重量(kg)  
X: 常数(kg)  
S: 行程(mm)  
Y: 系数(kg/mm)

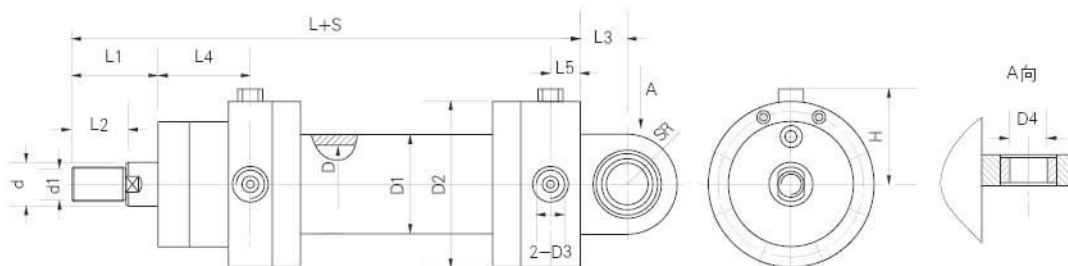
参数 缸径Dia	不同型式的常数X值					Y
	S	B	G	T	W	
Ø50	11.38	12.72	14.23	14.69	14.69	0.015
Ø63	15.94	18.83	18.67	22.72	22.27	0.019
Ø80	25.2	28.7	28	24	24	0.036
Ø100	41	47	53	40	40	0.047
Ø125	59.6	69.05	76.1	73.55	73.55	0.076
Ø160	145.5	154.7	178.4	159.2	159.2	0.126
Ø200	266.62	281.13	305.22	318.22	318.22	0.199
Ø250	463.52	491.29	520.4	551.46	551.46	0.290

#### 订货须知 Note for Order

1. 请按型号说明, 填写订货合同 / Please according to install opinion to make the order
2. 密封件的一般供货状态为国产密封件, 欲采用国外密封件者请在合同中注明 / Normally we offer the local seals. If request for import seals, please note in contract.
3. 涂漆: 一般为苹果绿色, 有特殊要求者请注明 / Paint: Normally in green, other request please advise in advance.
4. 有特殊使用要求者请与我公司技术部门联系协商 / Any special request please contact us.

#### 外形尺寸 Outlook & Dimension

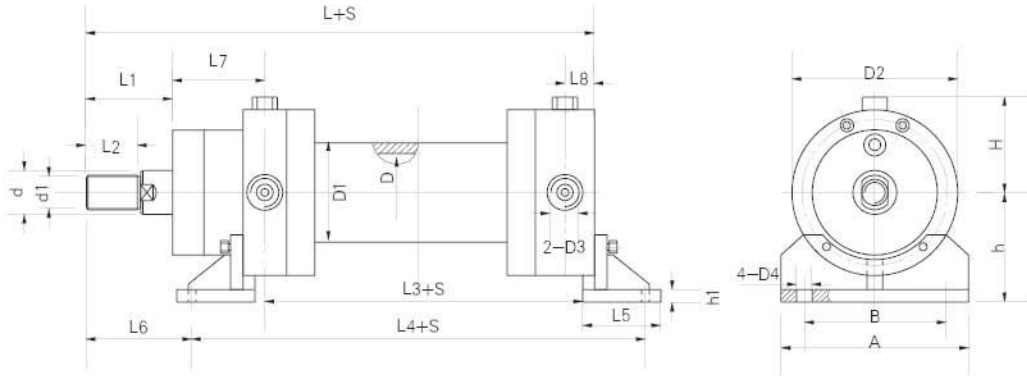
S 型: 尾部悬挂式 • Bottom hang (S type)



D	d	d1 (6g)	D1	D2	D3 (6H)	D4 (H8)	L	L1	L2	L3	L4	L5	b	SR	H
50	28	M22 × 1.5	63.5	106	M18 × 1.5	30	245	55	34.5	35	59	19	28	34	63
63	36	M27 × 2	76	120	M22 × 1.5	35	290	65	42	45	68.5	22.5	30	42	70
80	45	M33 × 2	102	136	M27 × 2	40	340	70	51	50	85	25	35	50	78
100	56	M42 × 2	121	160	M27 × 2	50	390	85	62	60	102.5	27.5	40	63	90
125	70	M56 × 2	152	192	M33 × 2	60	460	105	81	70	120.5	32.5	50	70	106
160	90	M72 × 2	194	266	M33 × 2	80	560	135	94	92	135	40	60	88	143
200	110	M90 × 3	245	322	M42 × 2	100	675	145	115	125	190	45	70	115	171
250	140	M100 × 3	299	370	M48 × 2	120	790	185	121	150	210	60	90	150	195

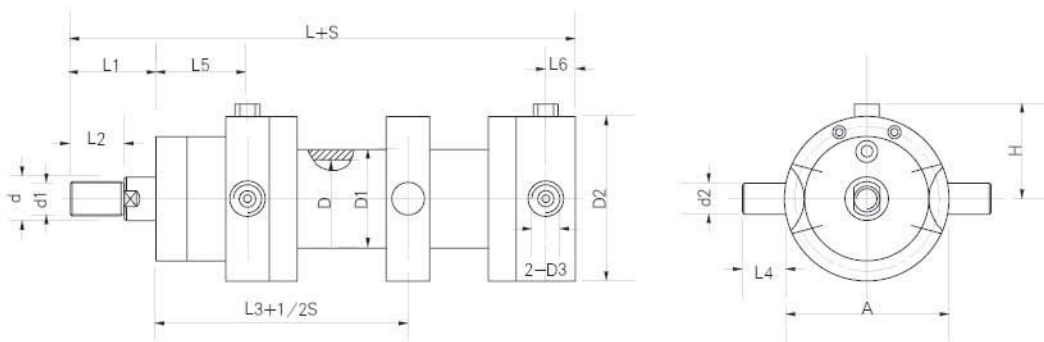
外形尺寸 Outlook & Dimension

G型： 支架固定式 · Foot fix (G type)



D	d	d1 (6g)	D1	D2	D3 (6H)	D4	L	L1	L2	L3	L4	L5	L6	L7	L8	A	B	h	h1	H
50	28	M22 × 1.5	63.5	106	M18 × 1.5	17.5	245	55	34.5	124	220	75	60	59	19	120	90	75	10	63
63	36	M27 × 2	76	120	M22 × 1.5	22	290	65	42	144	261	85	70	68.5	22.5	138	105	80	12	70
80	45	M33 × 2	102	136	M27 × 2	26	340	70	51	165	310	100	80	85	25	160	120	105	15	78
100	56	M42 × 2	121	160	M27 × 2	33	390	85	62	185	360	120	95	102.5	27.5	250	200	125	20	90
125	70	M56 × 2	152	192	M33 × 2	42	460	105	81	207	413	140	120	120.5	32.5	278	210	150	20	106
160	90	M72 × 2	194	266	M33 × 2	45	560	135	94	230	490	168	150	135	40	390	320	200	25	143
200	110	M90 × 3	245	322	M42 × 2	52	675	145	115	315	545	190	210	190	45	485	400	235	25	171
250	140	M100 × 3	299	370	M48 × 2	62	790	185	121	360	705	240	210	210	60	495	400	260	30	195

B型： 中间摆动式 · Middle swing (B type)



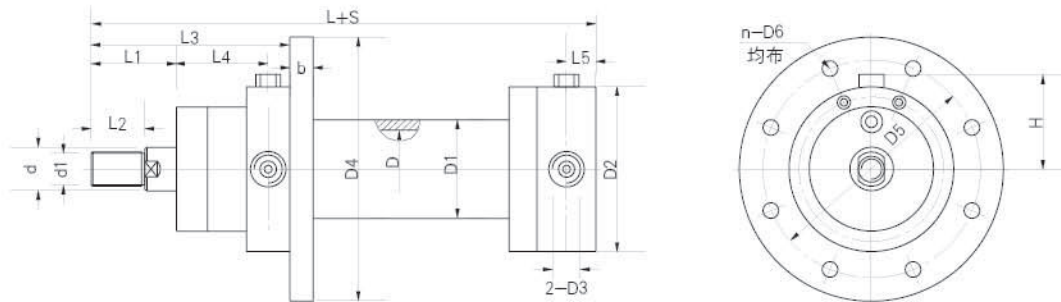
D	d	d1 (6g)	d2 (f9)	D1	D2	D3 (6H)	L	L1	L2	L3	L4	L5	L6	A	H
50	28	M22 × 1.5	30	63.5	106	M18 × 1.5	245	55	34.5	115	30	59	19	105	63
63	36	M27 × 2	35	76	120	M22 × 1.5	290	65	42	135	35	68.5	22.5	120	70
80	45	M33 × 2	40	102	136	M27 × 2	340	70	51	165	40	85	25	155	78
100	56	M42 × 2	50	121	160	M27 × 2	390	85	62	221	50	102.5	27.5	220	90
125	70	M56 × 2	50	152	192	M33 × 2	460	105	81	190	50	120.5	32.5	185	106
160	90	M72 × 2	60	194	266	M33 × 2	560	135	94	260	60	135	40	285	143
200	110	M90 × 3	80	245	322	M42 × 2	675	145	115	337	80	190	45	340	171
250	140	M100 × 3	100	299	370	M48 × 2	790	185	121	377	100	210	60	415	195

**JB****系列 液压缸**  
Series Hydraulic cylinder

JB2162-91

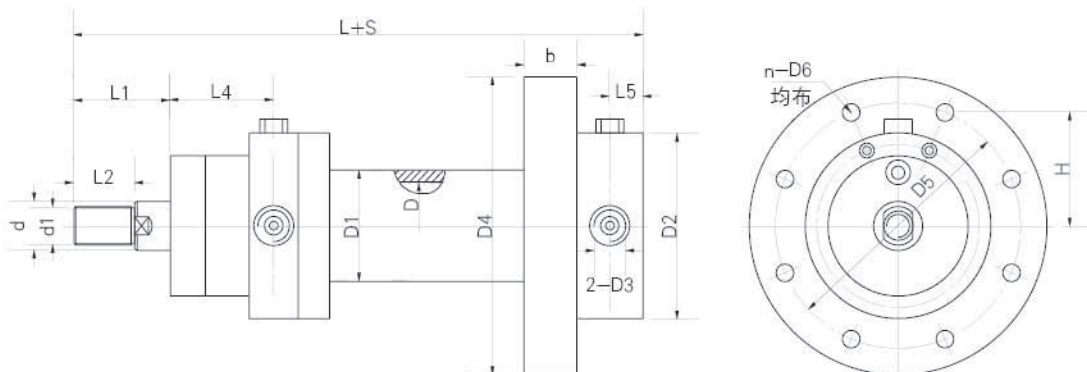
## 外形尺寸 Outlook &amp; Dimension

T型: 头部悬挂式 • Head hang (T type)



D	d	d1 (6g)	D1	D2	D3 (6H)	D4 (h11)	D5	D6	L	L1	L2	L3	L4	L5	b (h12)	n	H
50	28	M22 × 1.5	63.5	106	M18 × 1.5	170	140	11	245	55	34.5	133	59	19	30	6	63
63	36	M27 × 2	76	120	M22 × 1.5	198	160	13.5	290	65	42	156	68.5	22.5	35	6	70
80	45	M33 × 2	102	136	M27 × 2	214	176	13.5	340	70	51	180	85	25	35	8	78
100	56	M42 × 2	121	160	M27 × 2	258	210	17.5	390	85	62	215	102.5	27.5	45	8	90
125	70	M56 × 2	152	192	M33 × 2	310	250	22	460	105	81	258	120.5	32.5	45	8	106
160	90	M72 × 2	194	266	M33 × 2	365	295	26	560	135	94	310	135	40	60	10	143
200	110	M90 × 3	245	322	M42 × 2	504	414	33	675	145	115	380	190	45	75	10	171
250	140	M100 × 3	299	370	M48 × 2	585	478	39	790	185	121	455	210	60	85	10	195

W型: 尾部法兰式 • Bottom flange (W type)



D	d	d1 (6g)	D1	D2	D3 (6H)	D4 (h11)	D5	D6	L	L1	L2	L3	L4	L5	b (h12)	n	H
50	28	M22 × 1.5	63.5	106	M18 × 1.5	170	140	11	245	55	34.5	38	59	19	30	6	63
63	36	M27 × 2	76	120	M22 × 1.5	198	160	13.5	290	65	42	45	68.5	22.5	35	6	70
80	45	M33 × 2	102	136	M27 × 2	214	176	13.5	340	70	51	50	85	25	35	8	78
100	56	M42 × 2	121	160	M27 × 2	258	210	17.5	390	85	62	55	102.5	27.5	45	8	90
125	70	M56 × 2	152	192	M33 × 2	310	250	22	460	105	81	65	120.5	32.5	45	8	106
160	90	M72 × 2	194	266	M33 × 2	365	295	26	560	135	94	80	135	40	60	10	143
200	110	M90 × 3	245	322	M42 × 2	504	414	33	675	145	115	90	190	45	75	10	171
250	140	M100 × 3	299	370	M48 × 2	585	478	39	790	185	121	120	210	60	85	10	195