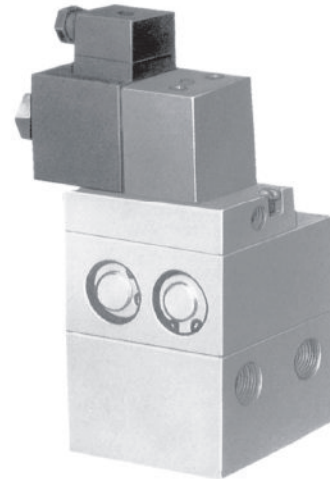


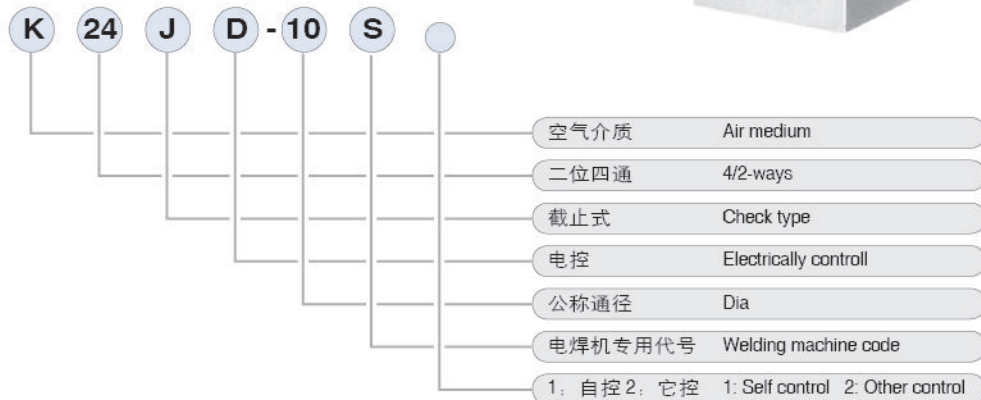
K24JD-S 系列二位四通电磁阀

Series 4/2-way solenoid valves

图形符号 Graphical symbols



型号注释 Note for type

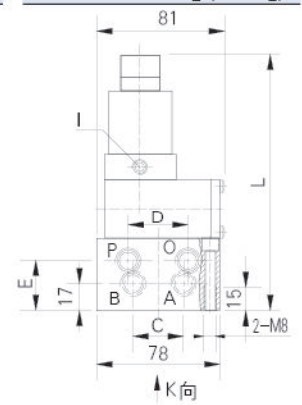
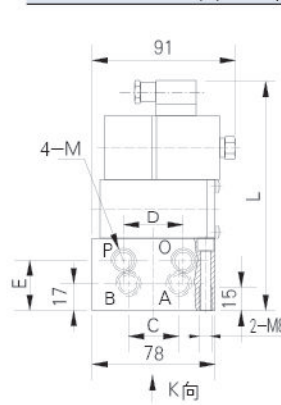


技术参数 Specification

型号 Type	K24JD-10S ₁ K24JD-10S ₂	K24JD-15S ₁ K24JD-15S ₂
公称通径 Dia(mm)	10	15
接管螺纹 Size of port	G3/8	G1/2
工作压力范围 Working pressure range(Mpa)	0.2~0.8	
介质温度 Medium tempt(°C)	5~50	
环境温度 Ambient tempt(°C)	5~50	
换向时间 Diverting time(sec)	≤0.06	
最高切换频率 Max switch over frequency(Hz)	≥8	
有效截面积S值 Effective sectional area S valve(mm ²)	40	60
泄漏量 Leakage rate(mL/min)	≤25	

K23JD-10S₁(15S₁)

K23JD-10S₂(15S₂)



外形尺寸 Outlook & Dimension

螺纹 Threads	C	D	E	F	L	M	I
型号 Type							
K24JD-10S ₁	32	38	31	64	145	G3/8	G1/8
K24JD-10S ₂					160		
K24JD-15S ₁	35	35	36	64	150	G1/2	G1/8
K24JD-15S ₂					165		

