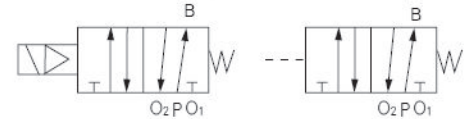


K25J-W 系列截止式电磁阀

Series directional valves 5/2-way



图形符号 Graphical symbols



产品特点 Features

K25J-W系列是二位五通管接截止式换向阀。该阀结构合理，动作可靠，维修方便，尤其适用于较为恶劣的工作环境。分电控和气控两种。

K25J-W series is pipe fitting shut-off directional valves 5/2 way. Streamlined structure, reliable action easy of maintenance, and especially suited to tough work conditions. Two types: electrical control and pneumatic control.

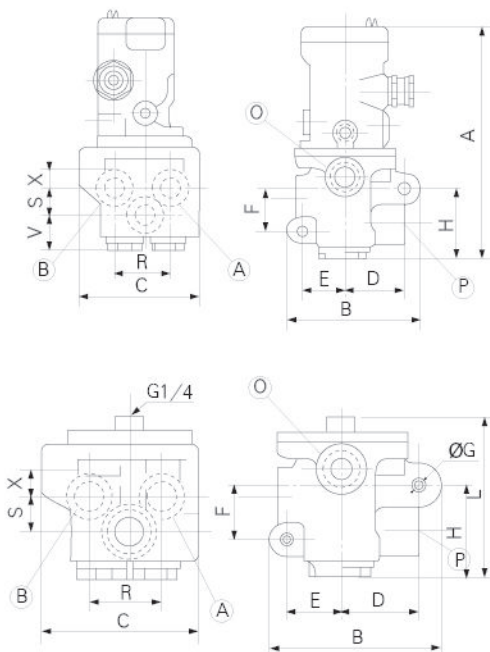
型号注释 Note for type



技术参数 Specification

型号 type	K25J-8W	K25J-10W	K25J-15W	K25J-20W	K25J-25W	K25J-32W	K25J-40W
参数 Item							
流量 Flow rate(m ³ /h)	5	7	10	20	30	40	50
有效截面积S值 Effective sectional area(mm ²)	20	35	60	120	190	300	400
泄漏量 Leakage rate(cm ³ /min)	≤50	≤100	≤200	≤300			
换向时间 Direction diverting time(sec)	≤0.04	≤0.06	≤0.10	≤0.15			
切换频率 Switch-over frequency Hz	≥10	≥8	≥4	≥3			
工作压力 Working pressure(MPa)	0.2~0.8						
电压 Voltage(V)	AC:380,220,110,36; DC:220,110,24						
环境温度 Ambient temperature(°C)	-5~50						

外形尺寸 Outlook & Dimension



型号 Type	公称通径 Dia	接管螺纹 Port Size		A	B	C	D	E	F	G	H	R	S	X	V	L	O	
		(英制)G	(公制)M															
K25J-15W	Ø8	G1/4	M12x1.25															
	Ø10	G3/8	M16x1.5	180	99	94	45	32	31	Ø10	55	44	19	16	28	90	G1/2	
	Ø15	G1/2	M20x1.5															
K25J-25W	Ø20	G3/4	M27x2															
	Ø25	G1	M33x2	222	127	142	52	47	52	Ø10	78	58	21	19	42	132	G1	
K25J-40W	Ø32	G1¼	M42x2															
	Ø40	G1½	M48x2	285	155	220	69	55	117	Ø10	140	80	36	35	52	187	G2	