

QF 系列电磁阀

series solenoid valves

QF1 系列电磁阀

series solenoid valves

图形符号 Graphical symbols

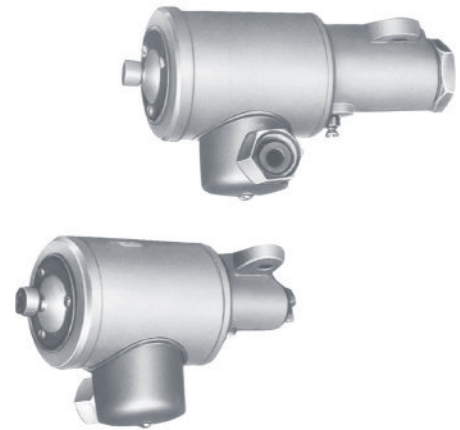


产品特点 Features

QF1系列是直流二位三通型电磁阀，有防水性，主要用于矿山等露天作业场合

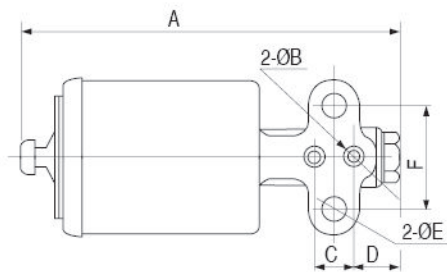
QF1series are 3/2-ways solenoid valves, they are water proof mainly used in open air work sites like minting.

型号注释 Note for type

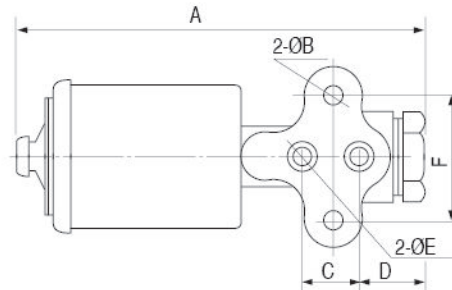


外形尺寸 Outlook & Dimension

QF1-22(QF1-2G)



QF1-24(QF1-4G)



型号Type	A	ØB	C	D	ØE	F
QF ₁ -22	184	8	20	21	11	50
QF ₁ -24	184	16	30	32	11	64

技术参数 Specification

型号 Type	QF ₁ -22	QF ₁ -24
性能 Item		
口径 Dia(mm)	2	4
有效截面积S值 Effective sectional area S valve(mm ²)	1.6	4
工作介质 Working Medium	洁净的压缩空气 Clear air	
线圈封装型式 Sealing mode of coils	绝缘漆封灌 Filled up with insulation paint	
额定电压 Voltage(V)	DC:220,110,50,24	
工作压力 Working pressure(MPa)	0.2~0.8	
连接方式 Mode of connection	板接式 Plate mounting	