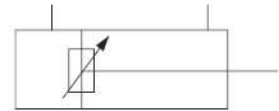


# QGB 系列可调缓冲气缸

## Series adjustable Buffer Cylinder



### 图形符号 Graphical symbols



### 产品特点 Features

单活塞杆、活塞双向作用、带可调缓冲。  
传统产品，经过技术更新，性能可靠、  
寿命长久耐用。各种安装形式、应用范围广。  
Single piston rod, piston action both directions, with adjustable buffering,  
traditional product through technical revamping, reliable performance, durable  
and long working life, adaptable to numerous installation modes, wide range of  
application.

### 型号注释 Note for type

QGB 50 x 100 - F

无缓冲气缸 / No-buffer cylinder

缸径 / Dia

行程 / Stroke

安装形式代号 Install option

M-中间轴销支承安装型 / M-middle mounting adjustable

G-底座安装型 / G-foot mounting

F-头部法兰安装型 / F-Front flange foot mounting

R-尾部法兰安装型 / R-Rear flange foot mounting

S-尾部单耳环安装型 / S-swivel foot mounting

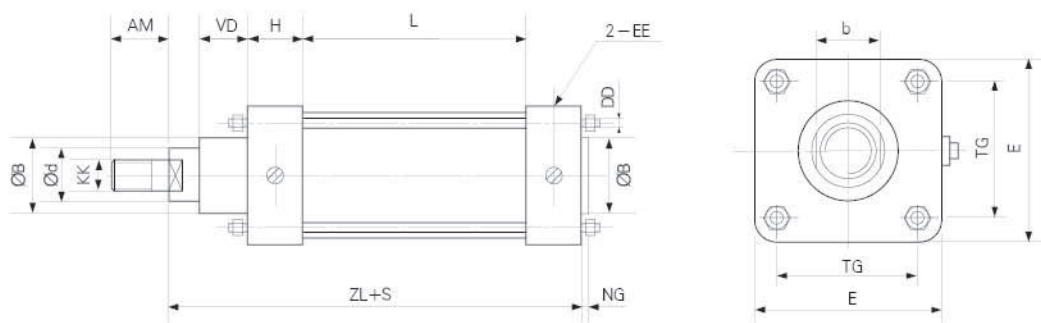
不注代号为基本型 / blank: normal type

### 技术参数 Specification

| 项目 Item                           | 参数 Specification  |
|-----------------------------------|---|
| 工作压力 / Working pressure range:    | 0.05~1MPa   |
| 工作温度范围 / Working tempt range:     | -5~+60°C  |
| 活塞运动速度 / Piston speed: 50 500mm/s | 50~500mm/s  |
| 工作介质 / Working medium:            | 干燥洁净含油雾的压缩空气 Dry and clean compressed air containing oil mist |

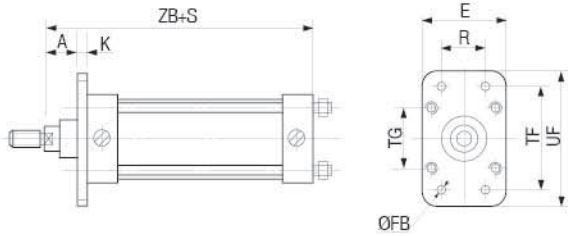
### 外形尺寸 Outlook & Dimension

#### 基本型 Normal Type



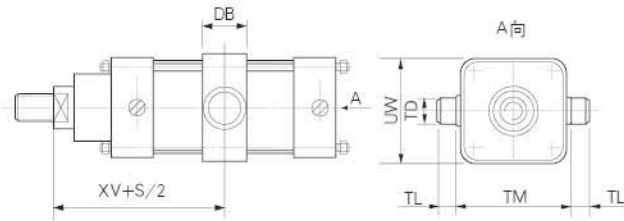
| 符号 Symbol<br>缸径 Bore | OB  | d  | KK         | AM | VD | H    | L   | EE        | ZL  | NG | b  | E   | TG  | DD  |
|----------------------|-----|----|------------|----|----|------|-----|-----------|-----|----|----|-----|-----|-----|
| 40                   | 34  | 16 | M12 × 1.25 | 30 | 21 | 36   | 53  | M10 × 1   | 170 | 3  | 14 | 55  | 40  | M6  |
| 50                   | 45  | 16 | M12 × 1.25 | 30 | 21 | 34.5 | 56  | M10 × 1   | 170 | 3  | 14 | 65  | 48  | M6  |
| 63                   | 45  | 25 | M20 × 1.5  | 35 | 26 | 40   | 65  | M14 × 1.5 | 200 | 3  | 22 | 80  | 60  | M8  |
| 80                   | 55  | 25 | M20 × 1.5  | 35 | 26 | 38.5 | 68  | M14 × 1.5 | 200 | 4  | 22 | 100 | 75  | M10 |
| 100                  | 55  | 32 | M27 × 1.5  | 40 | 34 | 53.5 | 68  | M18 × 1.5 | 245 | 4  | 27 | 115 | 90  | M10 |
| 125                  | 65  | 32 | M27 × 1.5  | 40 | 34 | 47.5 | 80  | M18 × 1.5 | 245 | 4  | 27 | 145 | 112 | M12 |
| 160                  | 80  | 40 | M30 × 1.5  | 50 | 40 | 57.5 | 90  | M22 × 1.5 | 293 | 4  | 34 | 190 | 145 | M16 |
| 200                  | 80  | 40 | M30 × 1.5  | 50 | 40 | 53.5 | 98  | M22 × 1.5 | 293 | 5  | 34 | 225 | 180 | M16 |
| 250                  | 110 | 50 | M39 × 1.5  | 60 | 50 | 73   | 104 | M27 × 1.5 | 350 | 5  | 41 | 280 | 225 | M20 |

f-头部法兰安装型 / F-Front flange foot mounting



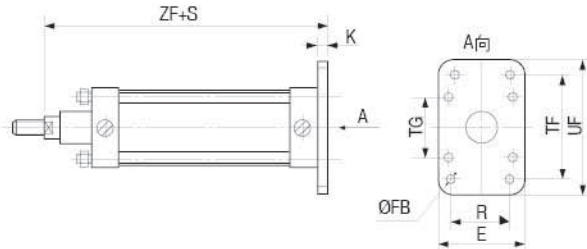
| 符号Symbol<br>缸径Bore | ZB  | K  | A  | ØFB | R   | E   | TG  | TF  | UF  |
|--------------------|-----|----|----|-----|-----|-----|-----|-----|-----|
| 40                 | 173 | 10 | 35 | 9   | 50  | 55  | 40  | 90  | 110 |
| 50                 | 173 | 10 | 35 | 9   | 55  | 65  | 48  | 90  | 110 |
| 63                 | 203 | 12 | 43 | 11  | 65  | 80  | 60  | 110 | 135 |
| 80                 | 204 | 12 | 43 | 11  | 80  | 100 | 75  | 135 | 160 |
| 100                | 249 | 16 | 54 | 13  | 100 | 115 | 90  | 160 | 200 |
| 125                | 249 | 16 | 54 | 13  | 120 | 145 | 112 | 180 | 230 |
| 160                | 297 | 20 | 68 | 17  | 150 | 190 | 145 | 230 | 270 |
| 200                | 298 | 20 | 68 | 17  | 190 | 225 | 180 | 280 | 340 |
| 250                | 355 | 25 | 75 | 21  | 230 | 280 | 225 | 410 | 410 |

B-中间轴销安装型 / B-middle fulcrum pin mounting



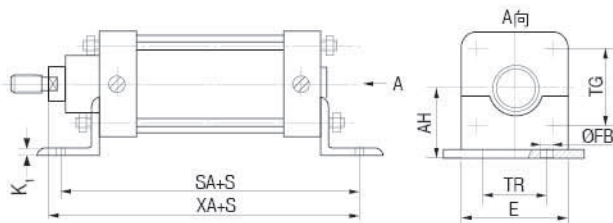
| 符号Symbol<br>缸径Bore | XV    | DB  | ØTD | UW  | TM  | TL | R <sub>1</sub> |
|--------------------|-------|-----|-----|-----|-----|----|----------------|
| 40                 | 107.5 | 30  | 15  | 58  | 75  | 15 | 2              |
| 50                 | 107.5 | 30  | 15  | 70  | 85  | 15 | 2              |
| 63                 | 127.5 | 35  | 20  | 85  | 100 | 20 | 2              |
| 80                 | 127.5 | 50  | 30  | 105 | 150 | 30 | 3              |
| 100                | 157.5 | 50  | 30  | 126 | 175 | 30 | 3              |
| 125                | 157.5 | 60  | 40  | 155 | 210 | 40 | 3              |
| 160                | 190.5 | 60  | 40  | 195 | 240 | 40 | 4              |
| 200                | 190.5 | 70  | 50  | 240 | 300 | 50 | 4              |
| 250                | 225   | 100 | 70  | 300 | 360 | 70 | 4              |

F-尾部法兰安装型 / F-Rear flange foot mounting



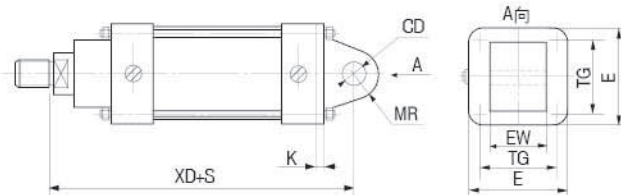
| 符号Symbol<br>缸径Bore | ZF  | K  | ØFB | R   | E   | TG  | TF  | UF  |
|--------------------|-----|----|-----|-----|-----|-----|-----|-----|
| 40                 | 180 | 10 | 9   | 50  | 55  | 40  | 90  | 110 |
| 50                 | 180 | 10 | 9   | 55  | 65  | 48  | 90  | 110 |
| 63                 | 212 | 12 | 11  | 65  | 80  | 60  | 110 | 135 |
| 80                 | 212 | 12 | 11  | 80  | 100 | 75  | 135 | 160 |
| 100                | 261 | 16 | 13  | 100 | 115 | 90  | 160 | 200 |
| 125                | 261 | 16 | 13  | 120 | 145 | 112 | 180 | 230 |
| 160                | 313 | 20 | 17  | 150 | 190 | 145 | 230 | 270 |
| 200                | 313 | 20 | 17  | 190 | 225 | 180 | 280 | 340 |
| 250                | 375 | 25 | 21  | 230 | 280 | 225 | 410 | 410 |

G-底座安装型 / G-Foot mounting



| 符号Symbol<br>缸径Bore | SA  | XA  | K1 | AH   | ØFB | TR  | TG  | E   |
|--------------------|-----|-----|----|------|-----|-----|-----|-----|
| 40                 | 185 | 200 | 5  | 53   | 9   | 50  | 40  | 55  |
| 50                 | 185 | 200 | 5  | 54   | 9   | 55  | 48  | 65  |
| 63                 | 225 | 240 | 6  | 65.5 | 11  | 65  | 60  | 80  |
| 80                 | 225 | 240 | 6  | 65   | 11  | 70  | 75  | 100 |
| 100                | 275 | 295 | 8  | 83   | 13  | 100 | 90  | 115 |
| 125                | 275 | 295 | 8  | 87   | 13  | 120 | 112 | 145 |
| 160                | 335 | 358 | 10 | 110  | 17  | 150 | 145 | 190 |
| 200                | 335 | 358 | 10 | 130  | 17  | 190 | 180 | 225 |
| 250                | 410 | 430 | 12 | 160  | 21  | 230 | 225 | 280 |

S-尾部单耳环安装型 / S-swivel foot mounting



| 符号Symbol<br>缸径Bore | XD  | K  | ØCD | MR | EW | TG  | E   |
|--------------------|-----|----|-----|----|----|-----|-----|
| 40                 | 210 | 10 | 15  | 15 | 30 | 40  | 55  |
| 50                 | 210 | 10 | 15  | 15 | 30 | 48  | 65  |
| 63                 | 250 | 12 | 20  | 20 | 30 | 60  | 80  |
| 80                 | 250 | 12 | 20  | 20 | 30 | 75  | 100 |
| 100                | 310 | 16 | 25  | 25 | 40 | 90  | 115 |
| 125                | 310 | 16 | 25  | 25 | 40 | 112 | 145 |
| 160                | 373 | 20 | 30  | 30 | 50 | 145 | 190 |
| 200                | 373 | 20 | 30  | 30 | 50 | 180 | 225 |
| 250                | 440 | 25 | 40  | 40 | 60 | 225 | 280 |