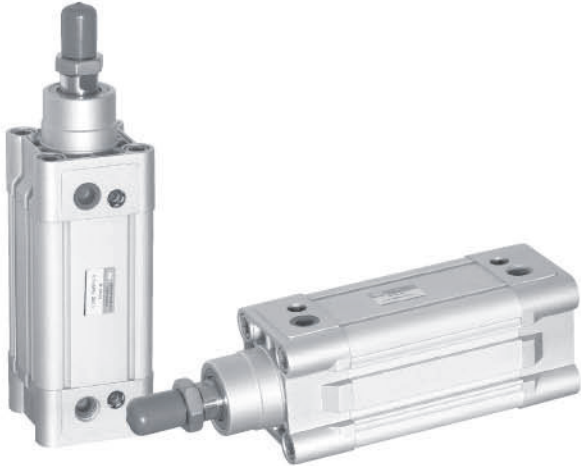
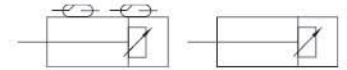


QGSD 系列(德)标准气缸

Series (Germany) Standard Cylinder



图形符号 Graphical symbols

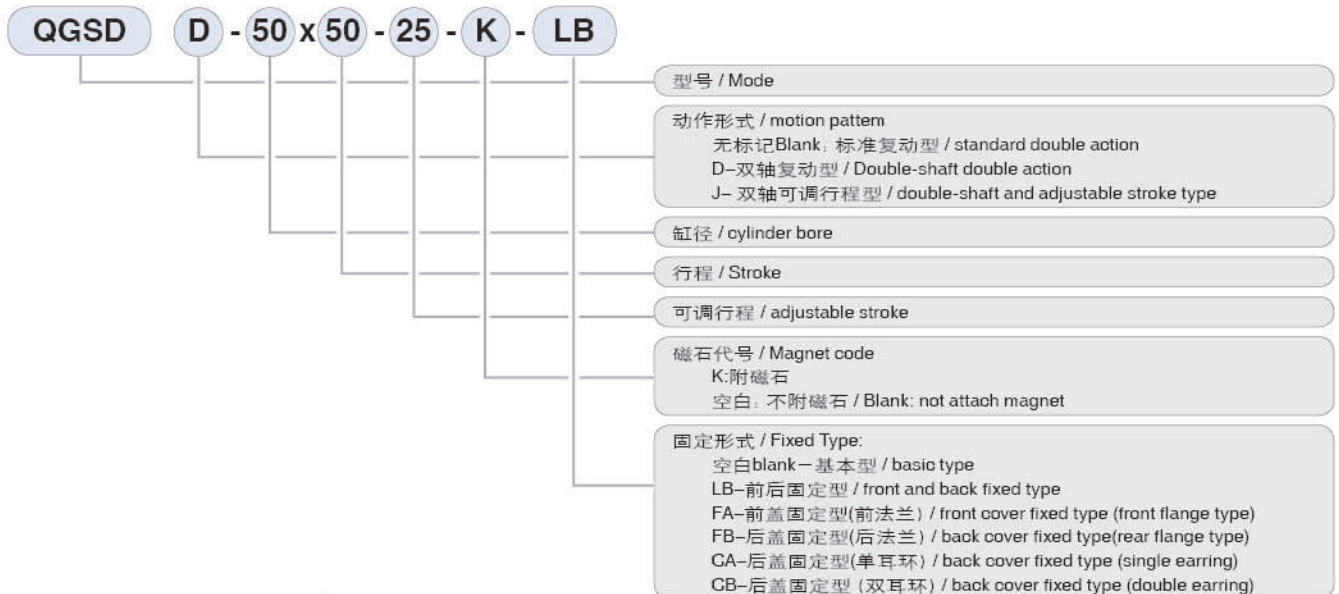


产品特点 Features

QGSD系列气缸是欧洲型轻型气缸，结构紧凑，安装形式和尺寸符合ISO6431国际标准，具有工作可靠，耐久性好，互换性强的特点。

QGSD series light cylinder are european styled light cylinder, featuring a compact structure and an installation mode and dimensions in conformity with ISO6431 standards. It also features reliable performance, durability and high inter-changeability.

型号注释 Note for type



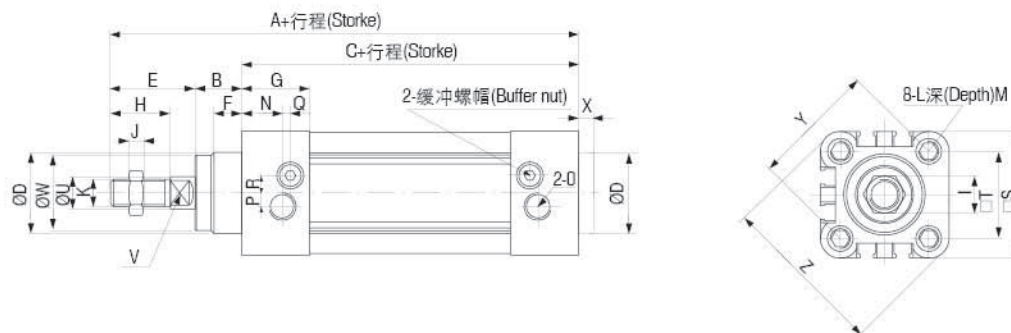
技术参数 Specification

缸径 Bore	32	40	50	63	80	100
动作形式 / Motion type	复动型 / Double Action					
工作介质 / Working medium	干燥洁净含油雾的压缩空气 Dry and clean compressed air containy oil mist					
固定型式 / Fixed type	基本型, LB型, FA型, FB型, CA型, CB型 / Basic type, LB type, FA type, FB type, CA type, CB type					
工作压力范围 / Working pressure range	0.15~1 MPa					
保证耐压力 / ensured pressure resistance	1.5MPa					
使用温度范围 / operating tempt range	5~60℃					
活塞运动速度范围 / Speed of piston	50~800mm/s					
缓冲形式 / buffer type	可调缓冲 / adjustable buffer					

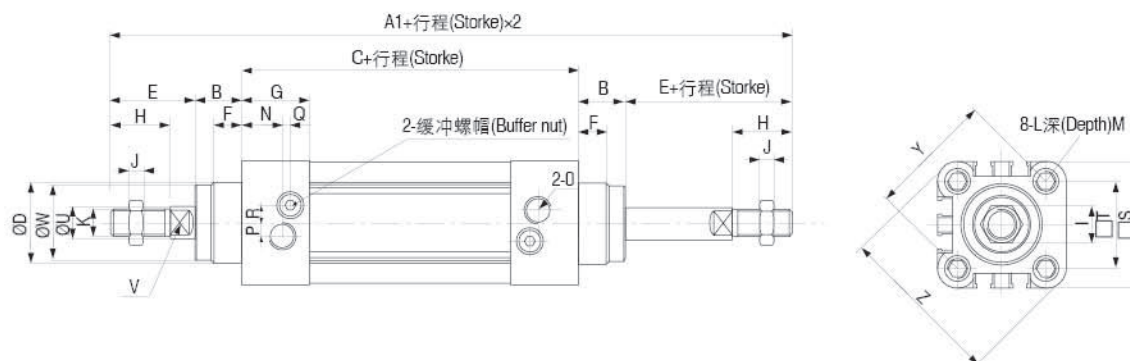
QGSD 系列 (德)标准气缸 Series (Germany) Standard Cylinder

外形尺寸 Outlook & Dimension

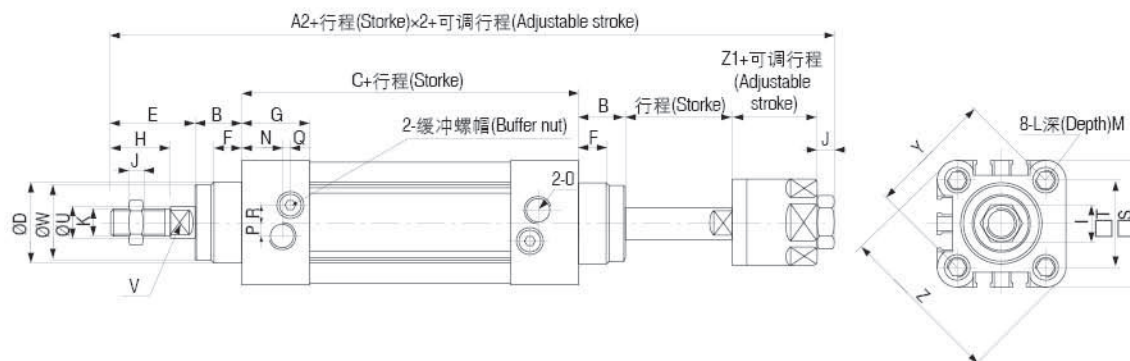
QGSD 基本型 / QGSD basic type



QGSDD型 / QGSDD type



QGSDJ型 / QGSDJ type



气缸 内径 Dia	A	A1	A2	B	C	D	E	F	G	H	I	J	K	L	M	N	O	P	Q	R	S	T	U	V	W	X	Y	Z	Z1
Ø32	142	190	185	16	94	30	32	10	25	22	17	6	M10x1.25	M6	12	15	G1/8	5	3	6.5	45	32.5	12	10	28	4	46	58.7	21
Ø40	159	213	207	20	105	35	34	10	29.5	24	17	7	M12x1.25	M6	12	17.5	G1/4	7	3	7	52	38	16	13	33	4	53.7	68	21
Ø50	175	244	233	27	106	40	42	10	32	32	23	8	M16x1.5	M8	12	21	G1/4	7	3	9	65	46.5	20	17	38	4	65.8	84.5	23
Ø63	190	258	247	26	122	45	42	10	36	32	23	8	M16x1.5	M8	12	23	G3/8	8	5	9	76	56.5	20	17	40	4	79.9	99.6	23
Ø80	214	301	288	35	127	45	52	10	37	40	26	10	M20x1.5	M10	15	24	G3/8	10	5	12	94	72	25	22	43	5	101.8	123.8	29
Ø100	229	321	308	40	137	55	52	10	39	40	26	10	M20x1.5	M10	15	26	G1/2	10	5	14	112	89	25	22	47	6	125.9	148.9	29