

QR 系列手动/脚踏阀

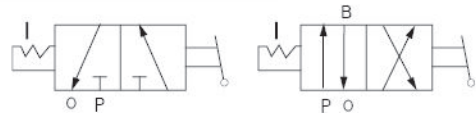
Series manual valves

QR5 系列推拉式手动换向阀

Series push type manual directional valves



图形符号 Graphical symbols



产品特点 Features

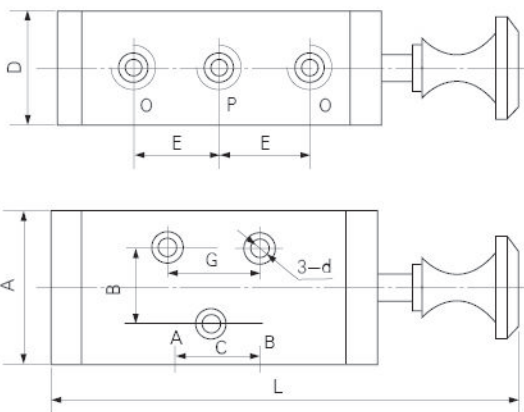
该阀是用来控制压缩空气流通方向或气路的通断，从而达到自动控制各种气动执行机构的目的。用作操纵机构。

This kind of valve is used to control the flow direction of compressed air or the open / closed state of the air route, thereby achieving the control of pneumatic execution mechanisms. It is used as operating mechanism.

型号注释 Note for type



外形尺寸 Outlook & Dimension



型号 Type	A	B	C	D	E	L	d
Q23R5(Q24R5)-L6	52	36	24	32	24	141	Ø6
Q23R5(Q24R5)-L8							
Q23R5(Q24R5)-L10	66	46	36	44	36	185	Ø7
Q23R5(Q24R5)-L15							

技术参数 Specification

型号 Type	公称通径 Dia (mm)	有效截面积S值 effective sectional area S (mm ²)	泄漏量 Leakage (ml/min)	接管螺纹 port size	工作压力 Working pressure (MPa)
Q23R5(Q24R5)-L6	6	10	≤0.1	G1/4 M12x1.25	0-0.8
Q23R5(Q24R5)-L8	8	20			
Q23R5(Q24R5)-L10	10	40	≤0.2	G3/8 M16x1.5	
Q23R5(Q24R5)-L15	15	60		G1/2 M20x1.5	